



1030 Pisces Trail

Pickering, ON | Lot 14



FOR SALE | \$1,350,000

- Double Car Garage Detached Home
- 36' Lot Frontage
- Brand New Home From Builder With Tarion Warranty



4



2.5

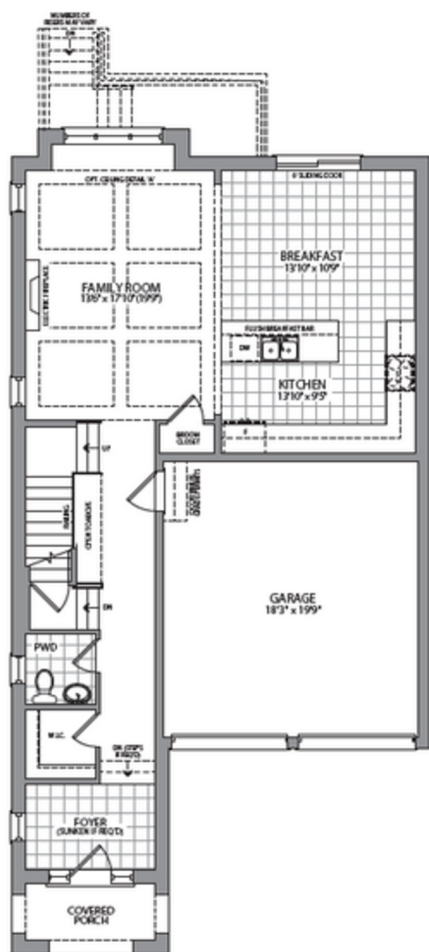


2,360 SQ. FT.

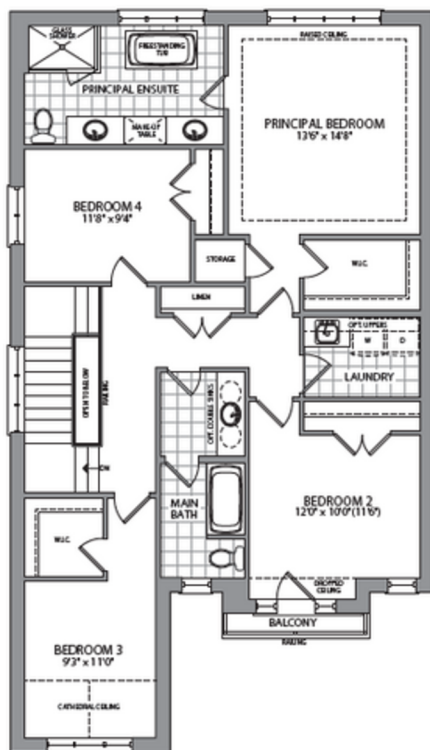


36-03 OPT | Elev. T

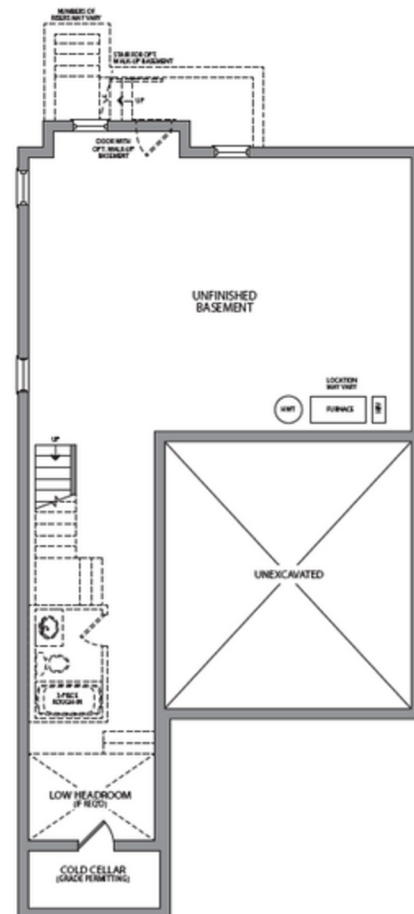




MAIN FLOOR
ELEV. T



UPPER FLOOR
4-BEDROOM OPTION
ELEV. T



BASEMENT
ELEV. T, C & F

Features & Finishes

ENERGY STAR CERTIFIED HOME

- Walk-out basement condition with larger basement windows and french doors at basement
- Smooth ceilings throughout main floor
- Hardwood throughout home with complementing stained staircase and wood pickets
- Carpet throughout Second floor
- Tv niche above fireplace
- Raised ceiling in principal bedroom with smooth ceiling

Gourmet Kitchen:

- Herringbone backsplash
- Stacked cabinets in kitchen
- Deep upper over fridge with 2 gables
- Gas line R/I for future stove
- Waterline R/I for future Fridge
- Cabinet molding with lighting under cabinets
- Chimney style hoodfan
- Upgraded pull out recycling bin
- Upgraded Quartz countertop with upgraded 1 ½" edge
- Microwave shelf with outlet at base cabinets in kitchen

Luxury Principal Ensuite includes:

- Double sink vanity for primary ensuite
- Freestanding tub in primary ensuite
- Glass shower enclosure with pot light
- Large shower niche approximately 16" x 28"



INVENTORY TERMS & CONDITIONS

Client acknowledges that this is an inventory lot and may not have access to all selections and floorplan options. The Vendor will transfer to the client any guarantees and warranties received from the manufacturer or suppliers. Client is aware that the exterior colour package has been chosen and assigned already for this model and may not match the above image. Please speak to a sales representative for further information. Prices include HST. Prices and promotions are subject to change without notice. Some conditions may apply. All lots are subject to availability. All measurements are approximate. E & O.E. April 2025